

Dalsten m'n liefste

♩ = 140

mf

16

A SOLI

24

32

Flugelhorn 1

2

40

A musical staff in treble clef with a key signature of two flats (B-flat and E-flat). It begins with a whole rest, followed by a fermata over a whole note, and ends with a quarter note G4.

B

48

A musical staff in treble clef with a key signature of two flats. It starts with a dynamic marking of *mf* and contains a sequence of notes: B-flat4 (half), G4 (quarter), F4 (quarter), E-flat4 (quarter), D4 (quarter), C4 (half), B-flat4 (half), A3 (quarter), G4 (quarter), and F4 (quarter).

56

A musical staff in treble clef with a key signature of two flats, continuing the melody from the previous staff with notes: B-flat4 (half), G4 (quarter), F4 (quarter), E-flat4 (quarter), D4 (quarter), C4 (half), B-flat4 (half), A3 (quarter), G4 (quarter), and F4 (quarter).

C

64

A musical staff in treble clef with a key signature of two flats, continuing the melody with notes: B-flat4 (half), G4 (quarter), F4 (quarter), E-flat4 (quarter), D4 (quarter), C4 (half), B-flat4 (half), A3 (quarter), G4 (quarter), F4 (quarter), E-flat4 (quarter), D4 (quarter), C4 (half), B-flat4 (half), A3 (quarter), G4 (quarter), and F4 (quarter).

72

A musical staff in treble clef with a key signature of two flats, continuing the melody with notes: B-flat4 (half), G4 (quarter), F4 (quarter), E-flat4 (quarter), D4 (quarter), C4 (half), B-flat4 (half), A3 (quarter), G4 (quarter), F4 (quarter), E-flat4 (quarter), D4 (quarter), C4 (half), B-flat4 (half), A3 (quarter), G4 (quarter), and F4 (quarter).

D

mf

80

A musical staff in treble clef with a key signature of two flats, continuing the melody with notes: B-flat4 (half), G4 (quarter), F4 (quarter), E-flat4 (quarter), D4 (quarter), C4 (half), B-flat4 (half), A3 (quarter), G4 (quarter), F4 (quarter), E-flat4 (quarter), D4 (quarter), C4 (half), B-flat4 (half), A3 (quarter), G4 (quarter), and F4 (quarter).

88

A musical staff in treble clef with a key signature of two flats, continuing the melody with notes: B-flat4 (half), G4 (quarter), F4 (quarter), E-flat4 (quarter), D4 (quarter), C4 (half), B-flat4 (half), A3 (quarter), G4 (quarter), F4 (quarter), E-flat4 (quarter), D4 (quarter), C4 (half), B-flat4 (half), A3 (quarter), G4 (quarter), and F4 (quarter).

Flugelhorn 1

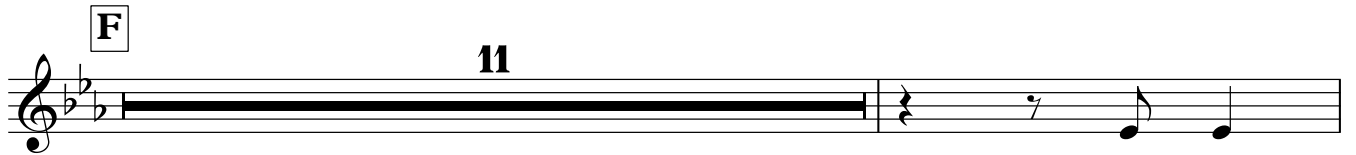
E **4** 96



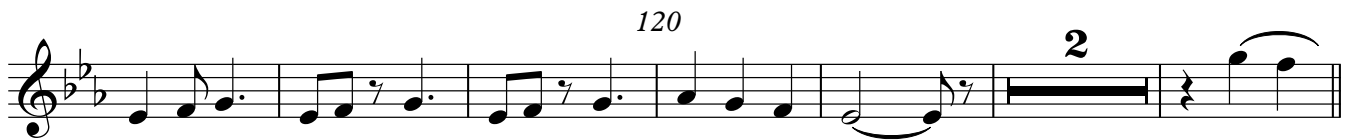
4 104



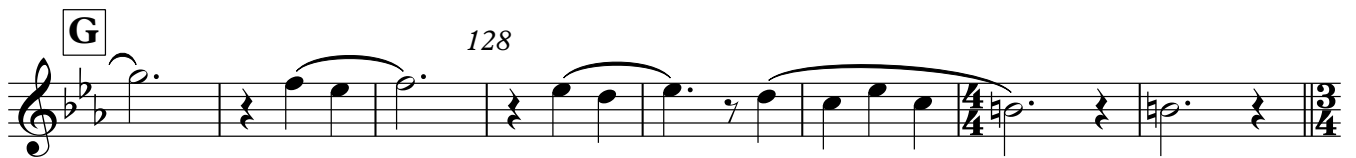
F **11**



120 **2**



G 128



H 136



I 144



152

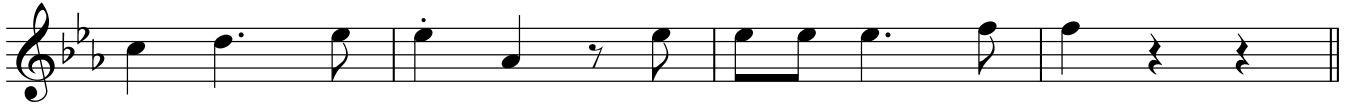


Flugelhorn 1

4

J

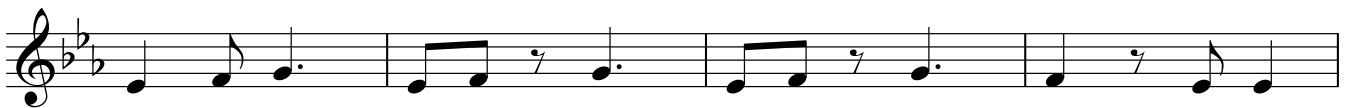
160



168



176



rit. - 184

